

... made by



---

► **Recycling & Waste Materials Containers**

---



...uniquely diverse

## ► The Company – committed to the environment



Suedlohn Site I, Manufacturing and Administration

**990 tonnes CO<sub>2</sub> savings**  
per year through our  
photovoltaic power plants!



Halberstadt Site II, Manufacturing

### Active climate protection

Professional waste separation has become increasingly important within the context of sustainability. This was reason enough for us to build the Logistic Centre and to open an additional paint shop in Suedlohn. These two projects help show how the course has been set for the future.

Clean manufacturing is one key to a clean environment. We put a strong focus on renewable energy sources: we have a large rooftop photovoltaic installation that makes an important contribution to Bauer's commendable eco-balance.





Administration building in Suedlohn



BAUER-Visitor forum in Suedlohn



## ► We have a responsibility

### Further training opportunities and qualification

Training is a process and not something restricted to the time spent on an educational or vocational course. The new “Forum” is a meeting place for employees, customers and sales partners, ideal for training sessions, seminars and presentations. The facilities are equipped with the most modern presentation and conference technology – the perfect venue at which to meet and exchange ideas.

### More than 40 years experience in training apprentices

At BAUER training is taken seriously – several of our graduates have been the “Best Student of the Year”, a title awarded by the regional Chamber of Industry and Commerce Northern Westphalia.

### Commitment to Suedlohn

BAUER GmbH is the first company in Suedlohn to cooperate with local schools as part of the project “Partners – Schools and Businesses” initiated by the regional Chamber of Industry and Commerce Northern Westphalia.

### Social Commitment

The Dieter Bauer Foundation has supported both cancer and MPS research since 2003. Funds from the foundation go to non-profit making organizations i.e. charities only, who help those affected. Further information (German only) is available at [www.dieterbauer-stiftung.de](http://www.dieterbauer-stiftung.de)





## ► Innovation – Construction – Production

Bauer GmbH not only develops and manufactures attachments for the fork-lift truck, products for the environmental sector and recycling and waste containers.

Founded in 1966, today the company has more than 280 employees and is one of the leading European manufactures in this field.

Qualified personal and the use of the most modern manufacturing technology available guarantee our products meet the highest standards where safety and quality are concerned. In 1993 the company was certified for the first time according to DIN EN ISO 9001:2008 ; the implementation of this quality assurance management system guarantees consistent high quality. „made by BAUER“.

Bauer products are only manufactured on the sites in Suedlohn and Halberstadt.





## ► Products for a lovely clean world



The combination of today's demands on modern town planners and landscape designers plus varying conditions on location make it necessary to consider customized solutions.

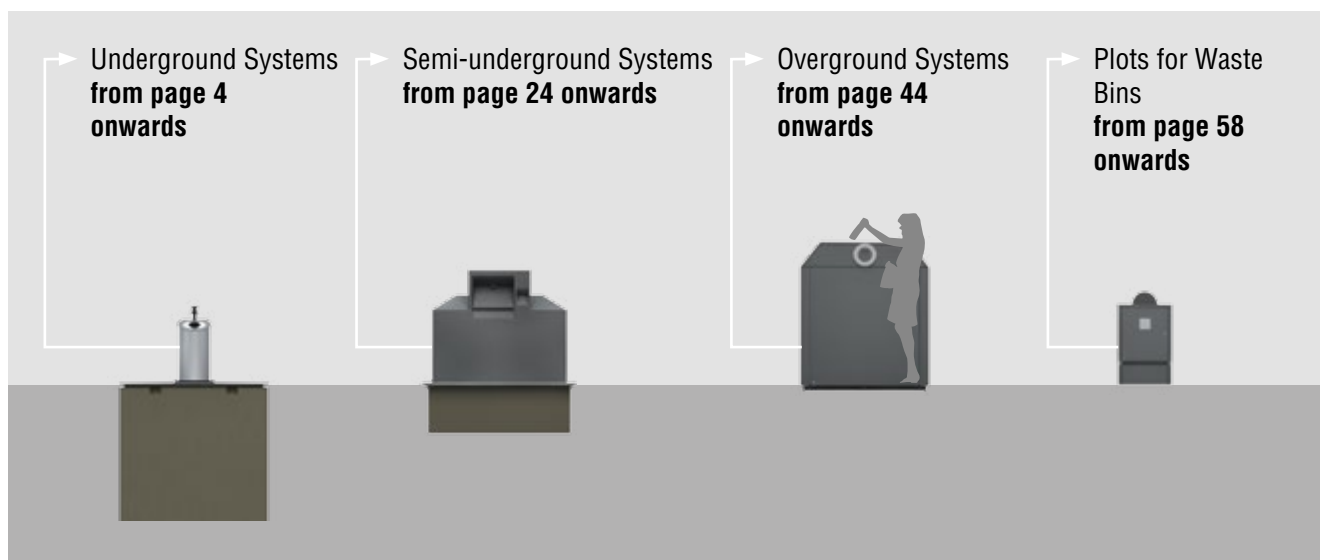
Our versatile range of container systems – underground, semi-underground and overground – for the collection of the most common types of waste clearly shows which concepts have become established on the market. Our manufacturing programme is uniquely diverse – volume and design can be chosen to suit the application.

Decades of experience and market presence qualify us – a family business – as a reliable partner.

Our Recycling and Waste Materials Containers not only comply with German standards and regulations they distinguish themselves by setting new standards.



DIN EN 13071



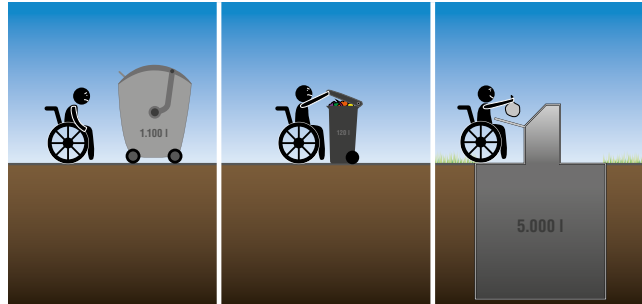




## Underground Systems ► Salient Characteristics

### Efficient and Accessible Collection of Waste and Recycling Materials – for Housing Complexes, in the Town, for Rest Areas and Recreational Facilities

- Low-level throw-ins – easy access for children and the handicapped in wheel chairs and senior citizens
- Ground level installation: no risk of stumbling, easily accessible in a wheelchair or using a walking aid
- The column can be marked using Braille or bas relief for identification by the blind or visually impaired
- Magnet holder on filling chute enables one-handed use
- Non-flammable
- Can be completely recycled
- Under ground it's cooler! More hygienic; no nasty smells or problems with vermin – even on hot summer days
- Large collection volume up to 6 m<sup>3</sup>
- Less space required, ideal for space available in recreation areas e.g. BBQ/picnic areas and playgrounds
- OMO emptying by crane: labour-saving, cost-effective, effects of demographic change taken into consideration
- People are far less likely to dirty collection areas that are kept clean
- No obstruction to view
- Basin-like trap doors retain any remaining liquid



#### Underground

Model GTU

Model GTS

Model GTL

Model GTR

#### Semi-Under-ground

Model GTE

Model GTT

Model GT-One

Model GTC

Model GTV

#### Overground

C-Models

Model WB

Waste Bins

Model GTM

TORINO-DUE

Model GAB

SECOMAT

Model GT

## Underground Systems

► Collection of Waste and Recycling Materials in Housing Complexes

It may not be a long way from the flat to the bins in the housing complex but it is often an arduous one. Putting out the rubbish on a regular basis can prove extremely difficult for senior citizens and the handicapped. In addition the conventional collection of household waste and recycling materials i.e. paper and light packaging also has several unpleasant side-effects: collection points take up a lot of space and are often an eyesore; unpleasant smells and vermin can cause problems; the bins are accessible to anyone and everyone; frequent emptying is costly and time-consuming.

Our Underground Systems – a great solution – clean, barrier-free and cost-effective.

... also for biodegradable waste!





# Underground Systems

► Collection of Waste and Recycling Materials in Housing Complexes



Underground

Model GTU

Model GTS

Model GTL

Model GTR

Semi-Underground

Model GTE

Model GTT

Model GT-One

Model GTC

Model GTV

Overground

C-Models

Model WB

Waste Bins

Model GTM

TORINO-DUE

Model GAB

SECOMAT

Model GT



## Underground Systems

## ► Collection of Recycling Materials in the Town



High demands are made of municipal collection systems for glass and paper. These systems must be economical because of the large quantities involved but there are also other important aspects such as appearance, cleanliness on location and environmental friendliness that need consideration.

Our Underground Systems meet these requirements and guarantee a clear view for all road-users.





## Underground Systems

### ► Collection of Residual Waste at Rest and Recreation Areas

The expansion of the EU has led to an increase in the volume of motorway traffic and to the number of visitors frequenting motorway facilities i.e. parking and rest areas. Consequently high demands are made of the collection systems for litter disposed of by travellers on the motorway.

Our Underground System – a great solution – clean and efficient.

Please refer to page 24 for information on an interesting alternative to the Underground Systems – our Semi-underground Systems



Large quantities of rubbish accumulate in parks and other recreation areas, particularly at the weekend. Our Underground System Model GTU is especially designed to accommodate a high volume and at the same time improve the appearance of the location.

Furthermore a high volume means less frequent emptying and that makes it easier to schedule routes.

Underground

Model GTU

Model GTS

Model GTL

Model GTR

Semi-Underground

Model GTE

Model GTT

Model GT-One

Model GTC

Model GTV

Overground

C-Models

Model WB

Waste Bins

Model GTM

TORINO-DUE

Model GAB

SECOMAT

Model GT



## Underground Systems ► GeoTainer® Model GTU



Consumers are more accepting of separate waste collection i.e. glass, paper, residual waste etc. than ever before. This readiness combined with the high demands made of modern urban development concepts means new requirements are also made of waste collection systems. They must be compatible with waste disposal habits and local conditions in order to avoid the negative effects we are only too familiar with – problems resulting from overflow, an obstructed view, litter or noise pollution and more frequent emptying.

The system behind the underground GTU range is particularly well-suited to meet these increased demands and everyone involved benefits from it.



Scan the QR code  
to watch the video





## ► Construction and Technical Information

Pick-up system for truck crane

Throw-in column

Pavement plateau

- Stud plate or rubber covering

Collecting container

- Collecting container made of sturdy steel sheet construction, screwed together
- 1, 2 or 3 chambers
- Basin-like trap doors retain any remaining liquid
- Glass: trap doors held and operated by high-strength chains, insulated against noise and connected to pick-up system
- Paper/household refuse: trap doors held and operated by traverse/leverage system which is connected to pick-up system

Safety plateau

- Locked securely in place
- Load capacity 200 kg

Concrete outer

- Reinforced, cast in one piece, watertight
- Pump sump
- Integrated drain for surface water
- Optional extra: buoyancy safeguard
- Anchor straps on the side to facilitate transport; can also be fitted on top (optional extra)



Underground

Model GTU

Model GTS

Model GTL

Model GTR

Semi-Underground

Model GTE

Model GTT

Model GT-One

Model GTC

Model GTV

Overground

C-Models

Model WB

Waste Bins

Model GTM

TORINO-DUE

Model GAB

SECOMAT

Model GT

## Technical Details

► GTU 2.0 ► GTU 3.0 ► GTU 4.0 ► GTU 5.0

Volume (approx. in m <sup>3</sup> )	2.0	3.0	4.0	5.0
Height (not incl. pick-up) (approx. in mm)	2785	2785	3250	3600
Built-in dimensions (w x d x h) (approx. in mm)	1960 x 1960 x 1800	1960 x 1960 x 1800	1960 x 1960 x 2265	1960 x 1960 x 2615
Weight concrete outer (approx. in kg)	4100	4100	4850	5250
Weight safety platform (approx. in kg)	265	265	280	290
Weight steel collecting container (approx. in kg)	595	615	665	705
Total weight (approx. in kg)	4960	4980	5795	6245

## Underground Systems ► GeoTainer® Model GTS



The Model GTS is similar to the Model GTU but requires even less space yet still has a high collection volume.

Only one car parking space is needed to install a triple collection point (clear glass, amber/green glass, paper). Thanks to the special design of the safety platform this collection point can accommodate a high volume.





## ► Construction and Technical Information

### Pick-up system for truck crane

### Throw-in column

### Safety plateau

- Stud plate or rubber covering

### Collecting container

- Collecting container made of sturdy steel, sheet construction, screwed together
- 1 or 2 chambers
- Basin-like trap doors retain any remaining liquid
- Glass: trap doors held and operated by high-strength chains, insulated against noise and connected to pick-up system
- Paper/household refuse: trap doors held and operated by traverse/leverage system which is connected to pick-up system

### Safety plateau

- Locked securely in place
- Load capacity 150 kg

### Concrete outer

- Reinforced, cast in one piece, watertight
- Pump sump
- Integrated drain for surface water
- Optional extra: buoyancy safeguard
- Anchor straps on the side to facilitate transport; can also be fitted on top (optional extra)



#### Underground

Model GTU

**Model GTS**

Model GTL

Model GTR

#### Semi-Under-ground

Model GTE

Model GTT

Model GT-One

Model GTC

Model GTV

#### Overground

C-Models

Model WB

Waste Bins

Model GTM

TORINO-DUE

Model GAB

SECOMAT

Model GT

## Technical Details

► GTS 2.0 ► GTS 3.0 ► GTS 4.0 ► GTS 5.0

Volume (approx. in m³)	2.0	3.0	4.0	5.0
Height (not incl. pick-up) (approx. in mm)	3125	3125	3605	3825
Built-in dimensions (w x d x h) (approx. in mm)	1665 x 1665 x 2100	1665 x 1665 x 2100	1665 x 1665 x 2580	1665 x 1665 x 2800
Weight concrete outer (approx. in kg)	3950	3950	4700	5050
Weight safety platform (approx. in kg)	180	180	180	180
Weight steel collecting container (approx. in kg)	540	600	660	680
Total weight (approx. in kg)	4670	4730	5540	5910

## Underground Systems ► GeoTainer® Model GTL



The GeoTainer® Model GTL is a combination of the Model GTU and the GTS. This means an increase in the collection volume.





## ► Construction and Technical Information

Pick-up system for truck crane

Throw-in column

Safety plateau

- Stud plate or rubber coverin

Collecting container

- Collecting container made of sturdy steel, sheet construction, screwed together
- Basin-like trap doors retain any remaining liquid
- Household refuse: trap doors held and operated by traverse/leverage system which is connected to pick-up system

Safety plateau

- Locked securely in place
- Load capacity 150 kg

Concrete outer

- Reinforced, cast in one piece, watertight
- Pump sump
- Integrated drain for surface water
- Optional extra: buoyancy safeguard
- Anchor straps on the side to facilitate transport; can also be fitted on top (optional extra)



*Compatible with  
Model GTU!*

### Technical Details

#### ► GTL 6.0

Volume (approx. in m³)	6.0
Height (not incl. pick-up) (approx. in mm)	3615
Built-in dimensions (w x d x h) (approx. in mm)	1960 x 1960 x 2615
Weight concrete outer (approx. in kg)	5250
Weight safety platform (approx. in kg)	225
Weight steel collecting container (approx. in kg)	745
Total weight (approx. in kg)	6220

#### Underground

Model GTU

Model GTS

Model GTL

Model GTR

#### Semi-Under-ground

Model GTE

Model GTT

Model GT-One

Model GTC

Model GTV

#### Overground

C-Models

Model WB

#### Waste Bins

Model GTM

TORINO-DUE

Model GAB

SECOMAT

Model GT

## Underground Systems ▶ Throw-in columns

### KUBA

- ▶ Galvanized steel sheet and powder coating
- ▶ L x w x h: 670 x 570 x 970 mm (not incl. pick-up)
- ▶ Brushed stainless steel filling chute
- ▶ Column (lockable) can be opened to 90°. The front of the deposit column can be swung open by an authorized person, such as the caretaker who then has direct access to the collection container. This means several rubbish sacks can be disposed of at once and the container can be filled to a higher degree.
- ▶ Also available with a fixed column



### Optional extras:

- ▶ Stickers
- ▶ Lock incl. rain cover made of aluminum
- ▶ "DeoPad" for a more pleasant smell



Throw-in for glass

- Synthetic (PE) flap Ø 165 mm (white, green or brown)
- Rubber rosette Ø 180 mm (black)



Throw-in for paper



Filling chute for household refuse



Filling chute for light packaging



# Underground Systems ▶ Throw-in columns

## RONDO

- ▶ sSainless steel and powder coated
- ▶ L x w x h: 670 x 670 x 1000 mm (not incl. pick-up)
- ▶ Deposit hatch brushed stainless steel
- ▶ Column (lockable) can be opened to 90°. The front of the deposit column can be swung open by an authorized person, such as the caretaker who then has direct access to the collection container. This means several rubbish sacks can be disposed of at once and the container can be filled to a higher degree.

### Optional extras:

- ▶ Stickers
- ▶ Double-skin drum (lockable)
- ▶ Lock incl. rain cover made of aluminium
- ▶ "DeoPad" for a more pleasant smell



## RONDO fixed column (cannot be swung open)

- ▶ Stainless steel and powder coated
- ▶ L x w x h: 670 x 635 x 970 mm (not incl. pick-up)
- ▶ Deposit hatch brushed stainless steel

### Optional extras: stickers, double-skin drum (lockable), foot pedal



Throw-in for glass:  
– Rubber rosette  
Ø 180 mm (black)



Throw-in for paper



Double-skin drum 80 or 160 liters  
– construction with foot pedal

#### Underground

Model GTU

Model GTS

Model GTL

Model GTR

#### Semi-Under-ground

Model GTE

Model GTT

Model GT-One

Model GTC

Model GTV

#### Overground

C-Models

Model WB

Waste Bins

Model GTM

TORINO-DUE

Model GAB

SECOMAT

Model GT

## Underground Systems ▶ Throw-in columns

### FINO

- ▶ Brushed stainless steel or stainless steel with powder coating
- ▶ L x w x h: 670 x 560 x 995 mm (not incl. pick-up)
- ▶ Filling chute made of stainless steel, brushed

#### Optional extras:

- ▶ Stickers, lockable double-skin drum, lock incl. rain cover, DeoPad



Throw-in for glass

- Synthetic (PE) flap Ø 165 mm (white, green or brown)
- Rubber rosette Ø 180 mm (black)



Throw-in for paper



With concealed throw-in for glass, lockable



With concealed throw-in for paper, lockable



Throw-in for glass

- Synthetic (PE) flap Ø 165 mm in white, green or brown
- Rubber rosette Ø 180 mm in black



Throw-in for paper



## Underground Systems ▶ Throw-in columns

### TUBO

- ▶ Brushed stainless steel or stainless steel with powder coating
- ▶ Ø x h: 550 x 960 mm (not incl. pick-up)

#### Optional extras:

- ▶ Stickers



Throw-in for glass

- Synthetic (PE) flap Ø 165 mm in white, green or brown
- Rubber rosette Ø 180 mm in black



Throw-in for glass

- 2 synthetic (PE) flaps Ø 165 mm in white, green or brown



Throw-in for paper

- Self-closing flap w x h = 400 x 200 mm



Throw-in for light packaging

- Self-closing flap w x h = 400 x 200 mm

### T-SHIRT (for used textiles)

- ▶ Blast cleaned, primed and painted in a RAL colour of your choice
- ▶ L x w x h: 1074 x 650 x 1260 mm (height not incl. pick-up)
- ▶ Twin-shell drum made of stainless steel, volume 80 liter, can be locked from the inside
- ▶ Lockable inspection door at the rear



Other Used Textile Banks (as Overground System) from page 48 onwards

#### Underground

Model GTU

Model GTS

Model GTL

Model GTR

#### Semi-Underground

Model GTE

Model GTT

Model GT-One

Model GTC

Model GTV

#### Overground

C-Models

Model WB

Waste Bins

Model GTM

TORINO-DUE

Model GAB

SECOMAT

Model GT

## Underground Systems ► Options for Throw-in columns



Stickers / Label



Colour coded



Lockable throw-in (incl. cover for lock)



Electronic identification system



"DeoPad" for a more pleasant smell



Bas relief or Braille



## Underground Systems

## ► Pick-up Systems

Containers with a 2 or 3 hook arrangement are lifted using a crane traverse. The movable hook must also be raised during the lifting process. The trap doors are operated by chains or a traverse leverage system connected to the movable hook. When this hook is lowered the trap doors automatically open.

DIN EN 13071



1-hook



2-hook



3-hook



Pick-up "mushroom"

### Underground

Model GTU

Model GTS

Model GTL

Model GTR

### Semi-Underground

Model GTE

Model GTT

Model GT-One

Model GTC

Model GTV

### Overground

C-Models

Model WB

Waste Bins

Model GTM

TORINO-DUE

Model GAB

SECOMAT

Model GT



### Salient Characteristics

- A combination of sculpture-like appearance and practicality for everyday use – easily blends into surroundings thus suited to any and every towncentre
- Collection points look better
- Strategically placed – a central collection point is only a short distance away – for everyone
- Does not obstruct the road-user's view
- Low-level throw-ins – easy access for children and the handicapped in wheel chairs
- When glass is deposited, the sound power level does not exceed 91 dB
- Under ground it's cooler! More hygienic; no nasty smells or problems with vermin
- EU patent





## ► Construction and Technical Information

Pick-up system for truck crane

Throw-in column

Pavement plateau

- Made of stud plate

Collecting container

- Made of galvanized steel sheet
- 1 or 2 chambers
- Basin-like trap doors retain any remaining liquid
- Centering plates facilitate positioning in the concrete outer
- Glass: trap doors held and operated by highstrength chains, insulated against noise and connected to pick-up system
- Paper/household refuse: trap doors held and operated by traverse/leverage system which is connected to pick-up system

Safety plateau

- Load capacity 150 kg
- Service access
- With automatic lock

Concrete outer

- Reinforced, cast in one piece, watertight
- Pump sump
- Built-in lifting loops
- Integrated drain for surface water
- Steel ring to protect edges
- Guides for safety platform



### Underground

Model GTU

Model GTS

Model GTL

Model GTR

### Semi-Under-ground

Model GTE

Model GTT

Model GT-One

Model GTC

Model GTV

### Overground

C-Models

Model WB

Waste Bins

Model GTM

TORINO-DUE

Model GAB

SECOMAT

Model GT

## Technical Details

► GTR 3.0

► GTR 4.0

► GTR 5.0

Volume (approx. in m³)	3.0	4.0	5.0
Height (not incl. pick-up) (approx. in mm)	2825	3400	3975
Built-in dimensions (Ø x h) (approx. in mm)	2070 x 1850	2070 x 2425	2070 x 2950
Weight concrete outer (approx. in kg)	3360	4215	4950
Weight safety platform (approx. in kg)	140	150	155
Weight steel collecting container (approx. in kg)	500	525	550
Total weight (approx. in kg)	4000	4890	5655





## Semi-underground Systems ► Salient Characteristics

An Efficient Way to Collect Waste and Recycling Materials – for Rest Areas and Recreation Areas

- A variety of designs for the visible section – easily blends into any surroundings
- Clean streets i.e. neat and tidy appearance
- Low-level throw-ins – easy access for children and the handicapped in wheel chairs
- An alternative to an underground system; stands only 900 mm above ground; no pavement plateau required
- Large collecting volume of 1.6 - 5 m<sup>3</sup>
  - Less frequent emptying
  - Less costs for logistics
- OMO emptying by crane: labour-saving, cost-effective, effects of demographic change taken into consideration
- Under ground it's cooler! More hygienic; no nasty smells or problems with vermin
- Non-flammable



Underground

Model GTU

Model GTS

Model GTL

Model GTR

Semi-Under-ground

Model GTE

Model GTT

Model GT-One

Model GTC

Model GTV

Overground

C-Models

Model WB

Waste Bins

Model GTM

TORINO-DUE

Model GAB

SECOMAT

Model GT

## Semi-underground Systems

► Household Waste Collection at Motorway Rest Areas



An increase in the volume of traffic has led to higher demands being made of the waste collection systems used by travellers on the motorway i.e. at motorway services, rest and parking areas.





## Semi-underground Systems

### ► Household Waste Collection at Motorway Rest Areas



We not only help improve the appearance of rest areas, we give them a unique look.

We offer efficient waste management systems. Clean rest areas not only look better – visitors are far less likely to litter areas that are kept clean.



#### Underground

Model GTU

Model GTS

Model GTL

Model GTR

#### Semi-Underground

Model GTE

Model GTT

Model GT-One

Model GTC

Model GTV

#### Overground

C-Models

Model WB

Waste Bins

Model GTM

TORINO-DUE

Model GAB

SECOMAT

Model GT



## Semi-underground Systems ► Collection of Residual Waste in Recreation Areas

Humans produce litter wherever they go, even in their free time which is often spent in parks and at holiday resorts, at the beach, in the mountains or nature reserves.

Our Model GTE has proved to be an ideal solution to the litter problem in recreational facilities.





## Semi-underground Systems

### ► Household Waste Collection in the Town

High demands are made of municipal collection systems for glass, paper and household waste. These systems must be economical because of the large quantities involved but there are also other important aspects such as appearance, cleanliness on location and environmental friendliness that need consideration.



#### Underground

Model GTU

Model GTS

Model GTL

Model GTR

#### Semi-Underground

**Model GTE**

Model GTT

Model GT-One

Model GTC

Model GTV

#### Overground

C-Models

Model WB

#### Waste Bins

Model GTM

TORINO-DUE

Model GAB

SECOMAT

Model GT



## Semi-underground Systems

## ► GeoTainer® Model GTE



Consumers are more accepting of separate waste collection i.e. glass, paper, residual waste etc. than ever before. This readiness combined with the high demands made of modern urban development concepts means new requirements are also made of waste collection systems. Our Semi-underground System Model GTE is an interesting alternative to our Underground Systems featured from page 4 onwards.





## ► Construction and Technical Information

### Pick-up system for truck crane

### Collecting container

- Collecting container made of galvanized steel sheet
- 1, 2 or 3 chambers
- Basin-like trap doors retain any remaining liquid
- Trap doors held and operated by traverse/leverage system which is connected to pick-up system

### Casing for the outer container (overground)

- Wooden casing “standard”
- Wooden casing “economic”
- Plastic panels
- Washed-out concrete
- Plane concrete
- Corrugated metal sheet
- Perforated metal sheet

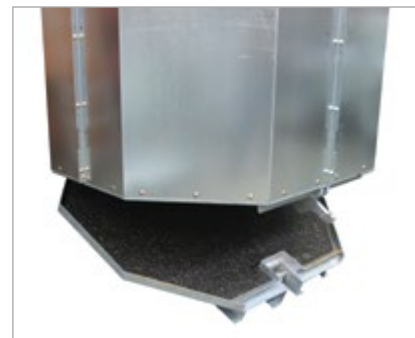
### Outer container

#### Concrete:

- Reinforced, cast in one piece, watertight
- Pump sump
- Anchor straps on the side to facilitate transport
- Steel ring to protect edges

#### or steel:

- Sturdy construction made of galvanized steel sheet
- With pick-up for lifting by crane



1 hook emptying via trap door

## Technical Details

► GTE 1.6 ► GTE 3.0 ► GTE 4.0 ► GTE 5.0

Volume (approx. in m³)	1.6	3.0	4.0	5.0
Height (not incl. pick-up) (approx. in mm)	1150	2100	2675	3250
Height visible section (approx. in mm)	1150	1150	1150	1150
Built-in dimensions (Ø x h) (approx. in mm)	-	1950 x 950	1950 x 1525	1950 x 2100
Weight concrete outer (approx. in kg)	1570	2605	3365	4100
Weight steel collecting container (approx. in kg)	345	410	450	490
Total weight (approx. in kg)	1915	3015	3815	4590

#### Underground

Model GTU

Model GTS

Model GTL

Model GTR

#### Semi-Underground

Model GTE

Model GTT

Model GT-One

Model GTC

Model GTV

#### Overground

C-Models

Model WB

Waste Bins

Model GTM

TORINO-DUE

Model GAB

SECOMAT

Model GT

## Semi-underground Systems

## ► GeoTainer® Model GTT



The GeoTainer Model GTT is a similar construction to the Model GTE. This special design was created not just for a different appearance – it has been optimized for transport too.





## ► Construction and Technical Information

### Pick-up system for truck crane

#### Collecting container

- Collecting container made of galvanized steel sheet
- 1, 2 or 3 chambers
- Basin-like trap doors retain any remaining liquid
- Trap doors held and operated by traverse/leverage system which is connected to pick-up system



#### Casing for the outer container (overground)

- Wooden casing “economic”
- Plastic panels
- Washed-out concrete
- Plane concrete
- Corrugated metal sheet
- Perforated metal sheet



#### Outer container

##### Concrete:

- Reinforced, cast in one piece, watertight
- Pump sump
- Anchor straps on the side to facilitate transport
- Sheet metal ring as edge protection

##### or option:

- Sturdy construction made of galvanized sheet steel
- With pick-up for lifting by crane



Emptying via trap doors

## Technical Details

### ► GTT 3.0

### ► GTT 4.0

### ► GTT 5.0

Volume (approx. in m³)	3.0	4.0	5.0
Height (not incl. pick-up) (approx. in mm)	1890	2390	2890
Height visible section (approx. in mm)	1255	1255	1255
Built-in dimensions (Ø x h) (approx. in mm)	1900 x 635	1900 x 1135	1900 x 1635
Weight concrete outer (approx. in kg)	2360	3055	3755
Weight steel collecting container (approx. in kg)	380	420	460
Total weight (approx. in kg)	2740	3475	4215

#### Underground

Model GTU

Model GTS

Model GTL

Model GTR

#### Semi-Underground

Model GTE

**Model GTT**

Model GT-One

Model GTC

Model GTV

#### Overground

C-Models

Model WB

#### Waste Bins

Model GTM

TORINO-DUE

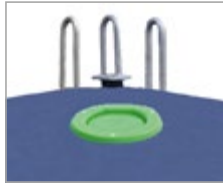
Model GAB

SECOMAT

Model GT

## Semi-underground Systems ▶ Throw-ins & Pick-up Systems

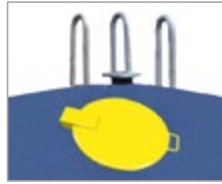
### Throw-ins



Synthetic (PE) flap for glass



Lid covering rectangular aperture for paper



Lid



Hood for glass



Hood for paper



Twin-shell drum



Identification system

DIN EN 13071



### Pick-up Systems



1-hook



2-hook



3-hook



Pick-up "mushroom"



## Semi-underground Systems ► Casing for the Outer Container



Wooden casing "standard"



Wooden casing "economic"



Washed-out concrete



Plane concrete



Perforated metal sheet



Corrugated metal sheet

### Underground

Model GTU

Model GTS

Model GTL

Model GTR

### Semi-Underground

Model GTE

Model GTT

Model GT-One

Model GTC

Model GTV

### Overground

C-Models

Model WB

Waste Bins

Model GTM

TORINO-DUE

Model GAB

SECOMAT

Model GT

## Semi-underground Systems

## ► GeoTainer® Model GT-One



The GeoTainer® Model GT-One is characterised by its slender form and light weight. This means less costs are incurred for transport and less space is needed on location.





## ► Construction and Technical Information

### Pick-up system for truck crane

#### Collecting container

- Collecting container made of galvanized steel sheet
- Basin-like trap door retain any remaining liquid
- Trap door held and operated by traverse/leverage system which is connected to pick-up system

#### Casing for the outer container (overground)

- Wooden casing “economic”
- Plastic panels
- Corrugated metal sheet
- Perforated metal sheet

#### Outer container

##### Steel:

- Sturdy construction made of galvanized steel sheet
- Anchor straps on the side to facilitate transport



Emptying via trap door

## Technical Details

### ► GT-One 3.0

Volume (approx. in m³)	3.0
Height (not incl. pick-up) (approx. in mm)	3000
Height visible section (approx. in mm)	1300
Built-in dimensions (Ø x h) (approx. in mm)	1250 x 1925
Weight concrete outer (approx. in kg)	250
Weight steel collecting container (approx. in kg)	320
Total weight (approx. in kg)	570

#### Underground

Model GTU

Model GTS

Model GTL

Model GTR

#### Semi-Underground

Model GTE

Model GTT

#### Model GT-One

Model GTC

Model GTV

#### Overground

C-Models

Model WB

#### Waste Bins

Model GTM

#### TORINO-DUE

Model GAB

SECOMAT

Model GT

## Semi-underground Systems

► Collection of Waste and Recycling Materials in the Town





## Semi-underground Systems

► Collection of Waste and Recycling Materials in Housing Complexes



The GTC “Duisburg” developed especially for large housing complexes and is equipped with two deposit hatches on opposite sides of the container.

Both deposit hatches are fitted with a lock to prevent unauthorized use. An identification system for source-related cost allocation is also available. An integrated solar panel and accumulator provide the system with electricity.



Underground

Model GTU

Model GTS

Model GTL

Model GTR

**Semi-Underground**

Model GTE

Model GTT

Model GT-One

**Model GTC**

Model GTV

Overground

C-Models

Model WB

Waste Bins

Model GTM

TORINO-DUE

Model GAB

SECOMAT

Model GT



## Semi-underground Systems

## ► GeoTainer® Model GTC



Model GTC



Model GTC-D

### Salient Characteristics

- Designed for everyone – low-level access the container stands in a galvanized ground basin
- A clear view for all road-users
- Relatively shallow installation depth, does not interfere with underground cables
- Easy to install and inexpensive to move should the necessity arise
- Neat appearance – the containers always stand exactly where they are supposed to
- Sturdy steel sheet construction, welded or screwed together
- Individual construction on request





## ► Construction and Technical Information

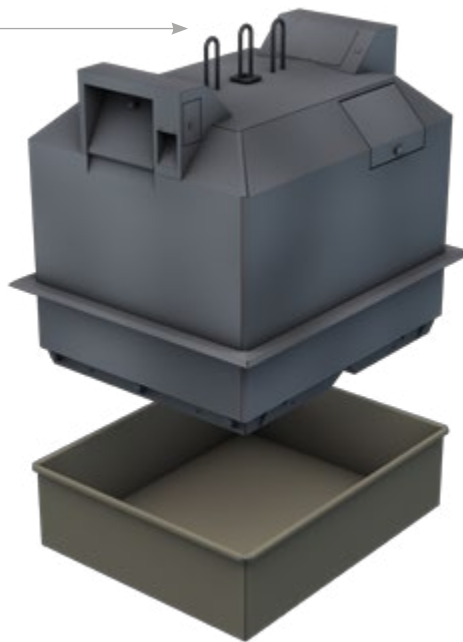
### Pick-up system for truck crane

#### Collecting container

- Collecting container made of steel sheet
- 1 or 2 chambers
- Basin-like trap doors
- Glass: trap doors held and operated by high-strength chains, insulated against noise and connected to pick-up system
- Paper/household refuse: trap doors held and operated by traverse/leverage system which is connected to pick-up system

#### Ground basin

- Galvanized
- 340 or 490 mm deep



Emptying via trap doors

### Technical Details

► GTC

► GTC

► GTC-D

Volume (approx. in m³)	2.7	3.0	3.0
Dimensions (w x d x h) (approx. in mm) (not incl. pick-up)	1835 x 1535 x 1300	1835 x 1535 x 1450	1830 x 1530 x 1600
Height visible section (approx. in kg)	990	990	1150
Weight (approx. in kg)	320	345	420

### Throw-ins for glass, paper and household refuse



Model GTC-D: filling chute



Model GTC: rubber rosette



Synthetic (PE) flap



Deposit openings protected by flaps



Deposit hatch

► There are more than 5000 GTC's in use!

Underground

Model GTU

Model GTS

Model GTL

Model GTR

Semi-Underground

Model GTE

Model GTT

Model GT-One

Model GTC

Model GTV

Overground

C-Models

Model WB

Waste Bins

Model GTM

TORINO-DUE

Model GAB

SECOMAT

Model GT

## Semi-underground Systems

### ► GeoTainer® Model GTV



The Model GTV is a similar construction to the Model GTU and works in exactly the same way. A galvanized collection container is placed in a concrete outer – part of which is below ground level.

The main difference is the shape: it's square – a refreshingly new appearance! The visible section of the concrete outer above ground level can be given a finish that blends in with the immediate surroundings – this can be a particular colour, wooden planking or perforated steel plate.





## ► Systemaufbau und technische Informationen

### Pick-up system for truck crane

### Collecting container

- Collecting container made of steel sheet
- 1, 2 or 3 chambers
- Various throw-ins
- Basin-like trap doors retain any remaining liquid
- Glass: trap doors held and operated by high-strength chains, insulated against noise and connected to pick-up system
- Paper/household refuse: trap doors held and operated by traverse/leverage system which is connected to pick-up system

### Concrete outer

- Reinforced, cast in one piece, watertight
- Pump sump
- Anchor straps on the side to facilitate transport



2-hook emptying via trap doors

#### Underground

Model GTU

Model GTS

Model GTL

Model GTR

#### Semi-Underground

Model GTE

Model GTT

Model GT-One

Model GTC

**Model GTV**

#### Overground

C-Models

Model WB

Waste Bins

Model GTM

TORINO-DUE

Model GAB

SECOMAT

Model GT

## Technical Details

### ► GTV 3.0

### ► GTV 4.0

### ► GTV 5.0

Volume (approx. in m³)	3.0	4.0	5.0
Height (not incl. pick-up) (approx. in mm)	2005	2485	2965
Height visible section (approx. in mm)	1305	1305	1305
Built-in dimensions (l x w x h) (approx. in mm)	1665 x 1665 x 700	1665 x 1665 x 1180	1665 x 1665 x 1660
Weight concrete outer (approx. in kg)	3288	4006	4700
Weight steel collecting container (approx. in kg)	428	478	528
Total weight (approx. in kg)	3716	4484	5228







## Overground Systems ▶ Salient Characteristics

The Overground System are sturdy and manufactured in accordance with the relevant standards – this means they have a long service life.

- ▶ Various designs for all types of waste and recycling materials
- ▶ Each system has its own look and easily blends in with the surroundings
- ▶ Available as a welded construction or can be screwed together
- ▶ Basin-like trap doors keep the location clean
- ▶ When glass is deposited, the sound power level does not exceed 91 dB
- ▶ Non-flammable, can be completely recycled



### Underground

Model GTU

Model GTS

Model GTL

Model GTR

### Semi-Under-ground

Model GTE

Model GTT

Model GT-One

Model GTC

Model GTV

### Overground

C-Models

Model WB

Waste Bins

Model GTM

TORINO-DUE

Model GAB

SECOMAT

Model GT

## Overground Systems

### ► Paper Containers / Containers for Household Refuse



Model C 104

- Available as a welded construction or can be screwed together
- Basin-like trap doors made of hot-dip galvanized steel sheet
- Throw-in on two sides, self-closing flap (paper) or various sizes available (household refuse)
- The traverse is connected to a leverage system which ensures optimal emptying
- Available on request:
  - Spray painted according to your choice from the RAL colour code chart
  - Anti graffiti
  - Stickers

Technical Details, please refer to page 53



Model C 204



Model C 304



Model C 306



Model C 406



## Overground Systems ► Bottle Banks



Model C 103

- Available as a welded construction or can be screwed together
- Basin-like trap doors made of galvanized steel sheet
- Throw-ins on 2 sides, rubber rosette or synthetic (PE) flap
- 1, 2 or 3 chambers
- Noise insulation
- Available on request:
  - Spray painted according to your choice from the RAL colour code chart
  - Anti graffiti
  - Stickers

Technical Details, please refer to page 53



Model C 201



Model C 405



Model C 301

Underground

Model GTU

Model GTS

Model GTL

Model GTR

Semi-Under-ground

Model GTE

Model GTT

Model GT-One

Model GTC

Model GTV

Overground

C-Models

Model WB

Waste Bins

Model GTM

TORINO-DUE

Model GAB

SECOMAT

Model GT

## Overground Systems ► Used Textile Banks

Our used textile banks are available in a variety of designs which is very important because the specifics of the location determine what type of container is needed for efficient operation. Our used textile banks are sturdy and extremely safe; they are made of sheet steel and are available either as a welded construction or they can be screwed together. Emptying by crane saves time and for this type of operation galvanized trap doors are fitted. Alternatively containers can be fitted with either a large door or a large door and trap doors.

Technical Details, please refer to page 53.



Model C 105



Model C 105-II



Model C 405 (with trap doors)



Model C 405 (with door)



Model C 805



As underfloor system with T-SHIRT column (please refer to page 19)



## ► Emptying Used Textile Banks – A Comparison

### Manual emptying via the door

Volume: 2 m<sup>3</sup>



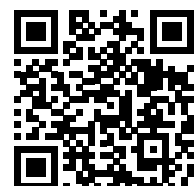
- Physically demanding and potentially dangerous to health
- Musculoskeletal disorders
- Time-consuming – emptying takes approx. 6 minutes per container

### Emptying by crane via the trap doors

Volume: 4 m<sup>3</sup>



- Back friendly, less effort required, conducive to health
- Less sick leave due to musculoskeletal disorders
- Effects of demographic change on the labour market i.e. an ageing workforce are taken into consideration
- Quickly emptied – approx. 1 minute per container
- High emptying volume:  
1 worker empties approx. 50-60 containers per day
- High collection volume:  
4 m<sup>3</sup> per container or 6-7 t per truck
- Content can be weighed by crane scales
- Individual monitoring for each location and worker
- Health and safety at work
- Anti-theft protection



Scan the QR code  
to watch the video

Underground

Model GTU

Model GTS

Model GTL

Model GTR

Semi-Underground

Model GTE

Model GTT

Model GT-One

Model GTC

Model GTV

Overground

C-Models

Model WB

Waste Bins

Model GTM

TORINO-DUE

Model GAB

SECOMAT

Model GT

## Overground Systems

### ► Containers for Electrical and Electronic Scrap

Many of the containers previously described can also be adapted for electrical and electronic scrap (WEEE). Constructions including a container for transport are available as well as containers designed for a swap system – their dimensions are optimised for transport



Model C 408 with transport containers



Model C 408 as interchangeable containers



Model C 608 as interchangeable containers



## Overground Systems ► Technical Information



The trap doors are opened for emptying using a crane truck

### Underground

Model GTU

Model GTS

Model GTL

Model GTR

### Semi-Underground

Model GTE

Model GTT

Model GT-One

Model GTC

Model GTV

### Overground

**C-Models**

Model WB

Waste Bins

Model GTM

TORINO-DUE

Model GAB

SECOMAT

Model GT

## Pick-up Systems



1-hook



2-hook



3-hook



Pick-up "mushroom"

## Emptying



Basin-like trap doors held and operated by high-strength chains, insulated against noise (glass) or traverse (paper) connected to pick-up system.



DIN EN 13071

## Overground Systems ► C-Models



C 100



C 200



C 300



C 400



C 500



C 600



C 800



C 900



## ► Technical Details

Models for glass	Volume (approx. in m <sup>3</sup> )	No. of chambers	Dimensions (w x d x h) (approx. in mm) (not incl. pick-up)
C 101 - C 103	3.25	1 - 3	1600 x 1700 x 1490
C 101 - C 103	3.6	1 - 3	1600 x 1700 x 1650
C 201 - C 203 / C 301 - C 303 / C 601 - C 603	1.5	1 - 3	900 x 1180 x 1600
C 201 - C 203 / C 301 - C 303 / C 601 - C 603	2.0	1 - 3	1150 x 1180 x 1600
C 201 - C 203 / C 301 - C 303 / C 601 - C 603	2.5	1 - 3	1400 x 1180 x 1600
C 201 - C 203 / C 301 - C 303 / C 601 - C 603	3.0	1 - 3	1700 x 1180 x 1600
C 201 - C 203 / C 301 - C 303 / C 601 - C 603	3.5	1 - 3	1900 x 1180 x 1600
C 201 - C 203 / C 301 - C 303 / C 601 - C 603	4.0	1 - 3	2100 x 1180 x 1600

### Models for paper

C 104	3.25	1	1600 x 1700 x 1490
C 104	3.6	1	1600 x 1700 x 1650
C 204 / C 304 / C 604	3.0	1	1700 x 1180 x 1600
C 204 / C 304 / C 604	3.5	1	1900 x 1180 x 1600
C 204 / C 304 / C 604	4.0	1	2100 x 1180 x 1600

### Models for household refuse

C 206 / C 306 / C 606	1.5	1	900 x 1180 x 1600
C 206 / C 306 / C 606	2.0	1	1150 x 1180 x 1600
C 306 / C 306 / C 606	2.5	1	1400 x 1180 x 1600
C 306 / C 306 / C 606	3.0	1	1700 x 1180 x 1600
C 306 / C 306 / C 606	3.5	1	1900 x 1180 x 1600

### Models for Used Textile / Electrical and Electronic Scrap

		Design	
C 105	3.25	trap doors	1600 x 1700 x 1650
C 105	3.60	trap doors	1600 x 1700 x 1810
C 105	3.25	door	1600 x 1700 x 1650
C 105	3.60	door	1600 x 1700 x 1810
C 105	3.25	trap doors and door	1600 x 1700 x 1650
C 105	3.60	trap doors and door	1600 x 1700 x 1810
C 105-II	3.60	trap doors	1700 x 1600 x 1655
C 105-II	4.50	trap doors	1700 x 1800 x 2030
C 105-II	3.60	door	1700 x 1600 x 1655
C 105-II	4.50	door	1700 x 1800 x 2030
C 105-II	3.60	trap doors and door	1700 x 1600 x 1655
C 105-II	4.50	trap doors and door	1700 x 1800 x 2030
C 405	2.00	trap doors	1400 x 1200 x 1870
C 405	4.00	trap doors	1500 x 1600 x 1795
C 405	2.00	door	1400 x 1200 x 1870
C 405	4.00	door	1500 x 1600 x 1795
C 405	2.00	trap doors and door	1400 x 1200 x 1870
C 405	4.00	trap doors and door	1500 x 1600 x 1795
C 805	2.50	door	1400 x 1200 x 2130

Underground

Model GTU

Model GTS

Model GTL

Model GTR

Semi-Under-  
ground

Model GTE

Model GTT

Model GT-One

Model GTC

Model GTV

Overground

C-Models

Model WB

Waste Bins

Model GTM

TORINO-DUE

Model GAB

SECOMAT

Model GT

## Overground Systems ► Recycling Bank Model WB

The perfect choice when only small quantities of material accumulate or when there are restrictions on space.

The standard boxes have a volume of 0.8 or 1.1 m<sup>3</sup> and can be used to collect glass, paper or used textiles. The galvanized steel sheet construction can be fitted with a projecting roof to protect the throw-in area from the elements (available on request). Instead of supporting feet, opt for wheels to make the unit mobile.

The 0.8 m<sup>3</sup> box can pass through a doorway.





## ► Technical Information

- Body made from galvanized steel sheet, construction riveted together
- Roof made from steel, welded construction
- Basin-like trap door retains any remaining liquid
- 1- or 2-hook or a pick-up “mushroom”
- Throw-ins on 2 sides for glass, paper, household refuse or used textiles
- The trap door is connected to the pick-up system by chains; trap door and side walls covered with rubber matting
- Paper/household refuse/used textiles containers: trap doors held and operated by traverse/leverage system which is connected to pick-up system
- Roof primed and spray painted in a colour of your choice from the RAL colour code chart

### Accessory:

- 2 swivel castors with brake + 2 fixed castors made from polyamide Ø 180 mm



With castors, throw-in for glass



With projecting roof and castors, for glass



With projecting roof and castors, for paper



With projecting roof and castors, for used textiles



Emptying via trap doors



With projecting roof and castors, for household refuse



## Technical Details

Model	Volume (approx. in m³)	Design	Dimensions (w x d x h) (approx. in mm)
WB 800	0.8	with / without projecting roof	700 x 1100 x 1650
WB 1100	1.1	with / without projecting roof	1000 x 1100 x 1650

### Underground

Model GTU

Model GTS

Model GTL

Model GTR

### Semi-Underground

Model GTE

Model GTT

Model GT-One

Model GTC

Model GTV

### Overground

C-Models

Model WB

Waste Bins

Model GTM

TORINO-DUE

Model GAB

SECOMAT

Model GT

## Overground Systems ► Individual Construction





## Overground Systems ► Individual Construction



### Underground

Model GTU

Model GTS

Model GTL

Model GTR

### Semi-Underground

Model GTE

Model GTT

Model GT-One

Model GTC

Model GTV

### Overground

C-Models

Model WB

Waste Bins

Model GTM

TORINO-DUE

Model GAB

SECOMAT

Model GT







## Waste Bins ▶ Salient Characteristics

A wide range of products for a wide range of applications: overground, underground, encased or sunken containers for the town-centre, rest areas, housing complexes and private households.

- ▶ Clean appearance
- ▶ No litter "drifts"
- ▶ Design – a matter of individual choice
- ▶ Protection against vandalism



### Underground

Model GTU

Model GTS

Model GTL

Model GTR

### Semi-Underground

Model GTE

Model GTT

Model GT-One

Model GTC

Model GTV

### Overground

C-Models

Model WB

### Waste Bins

Model GTM

TORINO-DUE

Model GAB

SECOMAT

Model GT

## Waste Bins ▶ GeoTainer® Model GTM



What appears to be discreetly elegant on the surface, has something to hide. Whereas until now most litter bins have been quite small, the GeoTainer® Model GTM can accommodate larger quantities of litter from 0.6 - 1.0 m<sup>3</sup> - underground.

To empty the GTM the deposit column is unlocked and tilted back to reveal a large opening for the suction pipe of the road sweeper.



### Salient Characteristics

- ▶ A combination of practicality for everyday use and clean town-centre
- ▶ Cool storage underground is more hygienic – less trouble with nasty smells, insects or vermin centered vacuum shaft and inclined walls facilitate optimal cleaning
- ▶ Litter is protected from the wind – no litter “drifts”
- ▶ Easy and compact system. 1 opening for filling and emptying!
- ▶ Large volume 600 – 1000 litres means less frequent emptying; as a rule, no need to empty at the weekend
- ▶ Lockable Throw column, hinged by 90 °
- ▶ Blockages in the column are easy to deal with
- ▶ Non-flammable, can be completely recycled





## ► Technical Information

### Throw-in columns



**TORINO**  
– Stainless steel



**FIRENZE**  
– Stainless steel



**SIENA**  
– Galvanized finish



**TEXEL**  
– Stainless steel and powder coating (optional extras)

### Optional extras

- Powder coating according to your choice from the RAL colour code chart
- Dividing bar to reduce the size of the opening
- Ash tray
- Covering plate



Dividing bar in opening; ash tray on the column



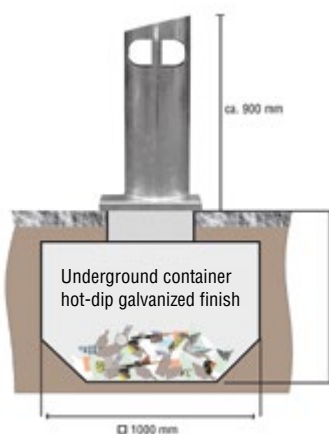
If necessary, the column can be removed e.g. as a safety precaution or to make more space if the location is needed for other purposes. In this case the vacuum shaft is covered using a special covering plate.

### Size

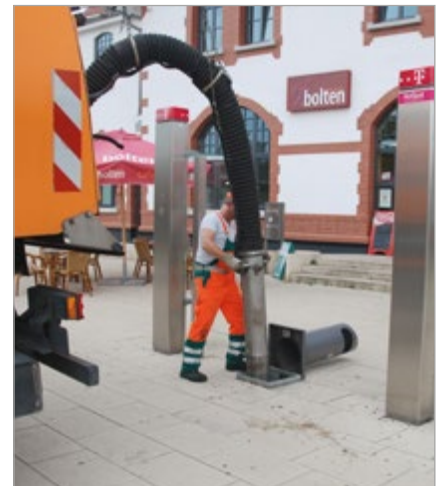
0.6 m³ = 790 mm

0.8 m³ = 990 mm

1.0 m³ = 1190 mm



### Emptying



Underground

Model GTU

Model GTS

Model GTL

Model GTR

Semi-Underground

Model GTE

Model GTT

Model GT-One

Model GTC

Model GTV

Overground

C-Models

Model WB

Waste Bins

Model GTM

TORINO-DUE

Model GAB

SECOMAT

Model GT

## Waste Bins ► Model TORINO-DUE



As well as the underground system Model GTM we also have an over-ground alternative to the conventional litter bin – our Model TORINO-DUE.

- Surround with integrated galvanized waste bin, volume 80 l
- Column Ø 400 mm, height 980 mm
- Sturdy construction made of stainless steel
- Lockable door with triangular lock
- With ash tray
- Prepared for anchorage to the ground
- Base plate: 480 x 480 mm (w x d)  
opening for depositing litter: 270 x 130 mm (w x h)
- Optional extra: powder coating according to your choice from the RAL colour code chart



Available with deposits for hypodermic needles and syringes





## Waste Bins ► BBQ Ash Container Model GAB



Public BBQs in parks and other green spaces are very popular when the weather is good. However, ash from the BBQ can be extremely dangerous if casually thrown into a conventional litter bin – it can easily catch fire and turn out to be very expensive if the fire brigade have to be called out. In the BBQ Ash Container Model GAB the ash can cool down safely.

- Surround with integrated galvanized waste bin
- Sturdy construction made of perforated metal sheet
- No larger pieces of rubbish can pass through the opening
- With fittings for a padlock
- Prepared for anchorage to the ground
- External dimensions (l x w x h) 800 x 800 x 800 mm
- Ash container in aluminum: Ø 450 mm, capacity 90 liters
- Spray painted according to your choice from the RAL colour code chart



### Underground

Model GTU

Model GTS

Model GTL

Model GTR

### Semi-Underground

Model GTE

Model GTT

Model GT-One

Model GTC

Model GTV

### Overground

C-Models

Model WB

### Waste Bins

Model GTM

TORINO-DUE

Model GAB

SECOMAT

Model GT

## Waste Bins ► SECOMAT Model S-D/-K

If several standard 1100 litre wheeled bins are in use on one location we recommend the Model SECOMAT to improve appearance and prevent vandalism. The Model S-D is ideal to create attractive parking, service and rest areas for travellers on the motorway.



The Model S-K has a deposit flap that can be locked so that only those authorised so to do can use the bin e.g. the residents of a housing complex.



## ► Technical Information

A surround for 120 or 240 litre wheelie bins – a construction that is a protected design

- Sturdy construction, galvanized steel plate with door that can be locked, powder coated finish, grey 7012
- Deposit opening covered by a red hood (Model S-D) RAL 3000
- Deposit flap that can be locked (Model S-K)
- Prepared for anchorage to the ground

Optional extra:

- Fixture for rubbish sacks (Model S 120 D and S 120 K)
- Stainless plaque with etching: cartoon man depositing litter
- Cigarette stubber



## Technical Details

Model	Design	Max. No. / Bin Size (No. x litres)	Dimensions (w x d x h) (approx. in mm)
S 120-D	with roof	1 x 120	675 x 630 x 1220
S 240-D	with roof	1 x 240	735 x 750 x 1325
S 240-D diamond	with roof	1 x 240 "diamond" pick-up system	735 x 800 x 1325
S 120-K	with flap	1 x 120	675 x 630 x 1115
S 240-K	with flap	1 x 240	735 x 750 x 1242

Underground

Model GTU

Model GTS

Model GTL

Model GTR

Semi-Under-ground

Model GTE

Model GTT

Model GT-One

Model GTC

Model GTV

Overground

C-Models

Model WB

**Waste Bins**

Model GTM

TORINO-DUE

Model GAB

**SECOMAT**

Model GT

## Waste Bins ► SECOMAT Model 4USE



### Salient Characteristics

- Sturdy steel construction with 1 lockable hood (triangular lock with handgrip, 2 lockable deposit flaps (profile cylinder locks) with handgrips, double wing doors
- Both deposit flaps and the hood are supported by gas compression springs so they can easily be opened or closed
- Guide rail – the wheeled bin can easily be pulled out or pushed back into position
- Powder coated on the outside, colour as requested
- Prepared for anchorage to the ground



### Technical Details

Model	Dimensions (w x d x h) (approx. in mm)
4USE	1550 x 1465 x 1637



## Waste Bins ► SECOMAT Model S1100



### Salient Characteristics

Housing for 1100 litre wheelie bins as well as waste bags.

- Sturdy steel construction with a lockable hood
- Gas compression springs make it easy to open or close – powder coated finish, in a RAL colour of your choice
- Prepared for anchorage to the ground

Optional extra:

- Side and back walls
- Double wing doors
- Floor

### Technical Details

Model      Dimensions (w x d x h) (approx. in mm)

S1100	1550 x 1350 x 1650
-------	--------------------



Underground

Model GTU

Model GTS

Model GTL

Model GTR

Semi-Underground

Model GTE

Model GTT

Model GT-One

Model GTC

Model GTV

Overground

C-Models

Model WB

**Waste Bins**

Model GTM

TORINO-DUE

Model GAB

**SECOMAT**

Model GT

## Waste Bins ▶ GeoTainer® Model GT



### Salient Characteristics

- ▶ No trouble caused by nasty smells or vermin
- ▶ Clean streets i.e. neat and tidy appearance
- ▶ Makes it possible to choose the right location: easy access for everyone involved – for those who fill the bin and those who empty it
- ▶ Level access and safe to walk on
- ▶ Simple installation
- ▶ Easy and safe to operate
- ▶ Protected from unauthorized use





## ► Technical Information

The wheelie bins stand on an electrically driven platform that can be raised or lowered at the turn of a key.

The lid opens automatically as the platform is raised so it is easy to fill or empty the bins (GT-1/3/4). The platform is operated i.e. raised or lowered by a key switch; for safety reasons this must be located in the immediate vicinity of the unit. The platform automatically comes to a halt once it has reached its final position.

It is not necessary to raise the platform to the final position in order to have access to the bin – it can be stopped at any height, making it ideal for children or the handicapped in wheelchairs. It is possible to operate the unit using a key that fits an existing master-key system.



Key-operated switch



An anti-skid surface coating is available. This finish makes sense if the GeoTainer® is embedded in a paved area – the colour of the coating can be chosen to match the surrounding paving.



Column with switch



Lid that can be driven on

## Technical Details

Model	Space required (max. no. of) 240 or 1100 litres bins	Space required (l x w) (in mm)	Built-in dimensions (w x d x h) (in mm)	Usage height (in mm)	Load capacity (in kg)	Connection	Weight (in kg)
GT-1	- / 1	1600 x 1290	1935 x 1700 x 1910	1500	500	400V/16A	850
GT-3	3 / -	1900 x 870	2575 x 1120 x 1500	1100	350	400V/16A	570
GT-4	4 / -	2500 x 870	3150 x 1120 x 1500	1100	350	400V/16A	800

Underground

Model GTU

Model GTS

Model GTL

Model GTR

Semi-Under-  
ground

Model GTE

Model GTT

Model GT-One

Model GTC

Model GTV

Overground

C-Models

Model WB

**Waste Bins**

Model GTM

TORINO-DUE

Model GAB

SECOMAT

Model GT

## Waste Bins ▶ Underground Parking GeoTainer® Models GT- / GTB-1100



Wheelie bins should be easily accessible and not seen. Until now, it has been difficult to avoid this contrariety. However, the GeoTainer® Model GT is based on a convincing approach: the wheelie bins stand exactly where they are most needed, but they are located underground and cannot be seen.

There is no need to raise the wheeled bin to ground level except when it needs emptying. Any rubbish bags deposited in the column drop directly into the 1100 litre standard wheeled bin positioned below. The electrically driven platform can be raised or lowered back into the ground by using the key switch.





## ► Technical Information

Throw-in columns (please refer to page 16-20 for the Details)



KUBA



FINO



TUBO



POZZO

There is no need to raise the GT or GTB-1100 except when it needs emptying – any refuse deposited in the column automatically drops down into the bin. The key switch is turned in the appropriate direction to lower the bin back into the ground. The downward movement is interrupted when the break-circuit point is reached. This is a safety feature that automatically halts the platform 12 cm above the final base position. The key switch must be turned anew in order to continue lowering the bin and during this last phase an acoustic alarm can be heard.



**Model GT-1100:**  
Container made of galvanized steel sheet, welding, oil- and watertight, with an integrated safety platform



**Model GTB-1100:**  
Reinforced concrete outer cast in one piece, watertight with an integrated safety platform



Column with switch

## Technical Details

Model	Execution	Built-in dimensions (w x d x h) (in mm)	Height throw-in column (approx. in mm)	Space required (l x w) (in mm)	Usage height (in mm)	Load capacity (in kg)	Connection	Weight (in kg)
GT-1100	steel container	1935 x 1700 x 1910	970	1600 x 1290	1500	500	400V/16A	870
GTB-1100	concrete basin	1960 x 1960 x 2600	970	1600 x 1290	1500	500	400V/16A	6070

Underground

Model GTU

Model GTS

Model GTL

Model GTR

Semi-Under-ground

Model GTE

Model GTT

Model GT-One

Model GTC

Model GTV

Overground

C-Models

Model WB

Waste Bins

Model GTM

TORINO-DUE

Model GAB

SECOMAT

Model GT

## Waste bins ► GeoTainer® Models GT-770/2 -1100/2



The Models GT-770/2 and GT-1100/2 work in the same way as the GT-1100 and are technically speaking the same.

The only difference is that they are able to accommodate 2 standard wheeled bins – as the name suggests – so that two 770 litre bins or two 1100 litre wheeled bins can be raised or lowered simultaneously into the ground.

Throw-in columns  
(please refer to page 16-20)



### Technical Details

Model	Space required (max. no. of) 770 or 1100 litres bins	Space required (l x w) (in mm)	Built-in dimensions (B x T x H) (mm)	Load capacity (in kg)	Connection	Weight (without throw-in columns) (in kg)
GT-770/2	2 / -	2 x (985 x 1450)	2400 x 1705 x 2150	720	400V/16A	1650
GT-1100/2	- / 2	2 x (1285 x 1450)	3210 x 1635 x 2085	1020	400V/16A	1770



## ► Product Overview

<b>Underground</b>	<b>4</b>
► GeoTainer® Model GTU . . . . .	6
► GeoTainer® Model GTS . . . . .	12
► GeoTainer® Model GTL . . . . .	14
► Throw-in columns . . . . .	16
► Pick-up Systems . . . . .	21
► GeoTainer® Model GTR . . . . .	22
<b>Semi-underground</b>	<b>24</b>
► GeoTainer® Model GTE . . . . .	26
► GeoTainer® Model GTT . . . . .	32
► Throw-ins & Pick-up Systems . . . . .	34
► Casing for the Outer Container . . . . .	35
► GeoTainer® Model GT-One . . . . .	36
► GeoTainer® Model GTC . . . . .	40
► GeoTainer® Model GTV . . . . .	42
<b>Overground</b>	<b>44</b>
► Paper Containers / Containers for Household Refuse . . . . .	46
► Bottle Banks . . . . .	47
► Used Textile Banks . . . . .	48
► Containers for Electrical and Electronic Scrap . . . . .	50
► Technical Information . . . . .	51
► C-Models . . . . .	52
► Recycling Bank Model WB . . . . .	54
► Individual Construction . . . . .	56
<b>Waste Bins</b>	<b>58</b>
► GeoTainer® Model GTM . . . . .	60
► Model TORINO-DUE . . . . .	62
► BBQ Ash Container Model GAB . . . . .	63
► SECOMAT Model S-D/-K . . . . .	64
► SECOMAT Model 4USE . . . . .	66
► SECOMAT Model S1100 . . . . .	67
► GeoTainer® Model GT . . . . .	68
► Underground Parking GeoTainer® Models GT- / GTB-1100 . . . . .	70
► GeoTainer® Models GT-770/2 -1100/2. . . . .	72



► **BAUER GmbH**  
Eichendorffstr. 62  
46354 Südlohn  
GERMANY

Tel.: +49 2862 709-0  
Fax: +49 2862 709-156  
info@bauer-suedlohn.de

www.bauer-suedlohn.de  
www.geotainer.com



... made by



FORKLIFT TRUCK ATTACHMENTS

ENVIRONMENT / STORAGE

HAZARDOUS MATERIALS CONTAINERS

RECYCLING BANKS

INNOVATION | CONSTRUCTION | PRODUCTION

Ask for our free BAUER catalog 7.0