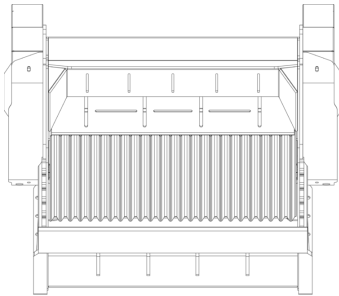
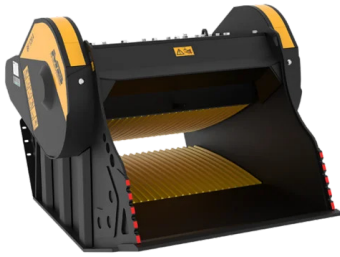
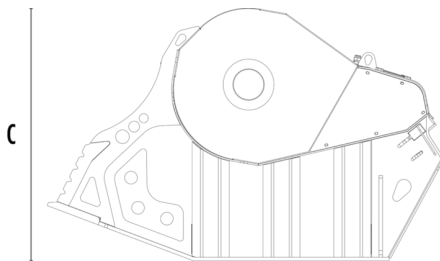


CRUSHER BUCKET BF120.4 S4



A



B

SPECIFICATIONS



| | | |
|-----------------------|----------------|-----------|
| Recommended excavator | ton | 30 - 45 |
| Weight | ton | 4,8 |
| Load capacity | m ³ | 1,3 |
| Pressure | bar | 220 - 280 |
| Back pressure | bar | < 10 |
| Oil flow rate* | l/min | 190 - 250 |
| Crusher mouth width | mm | 1205 |
| Crusher mouth height | mm | 540 |
| Size A | mm | 1620 |
| Size B | mm | 2185 |
| Size C | mm | 1390 |

* The minimum hydraulic flow rate value must be alongside the required operating pressure.

OPTIONAL ACCESSORIES

| | |
|----------------------|-------------------|
| Dust suppression kit | Hour meter |
| 24 V Iron Separator | 24 Month Warranty |

APPLICATION AREAS



Demolitions



Road works



Quarry



Mines



Tunnels



Enclosed spaces



Pipelines



Inert material recycling



Urban construction sites



Foundries



Forest maintenance

