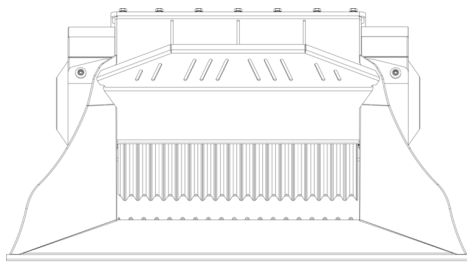
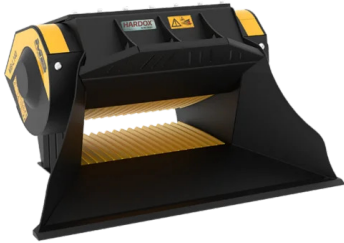
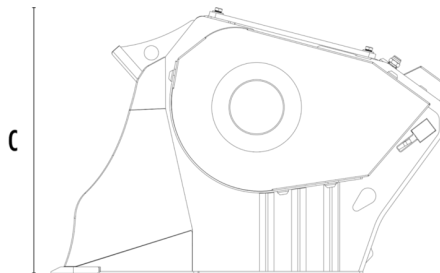


CRUSHER BUCKET

MB-L140 S2

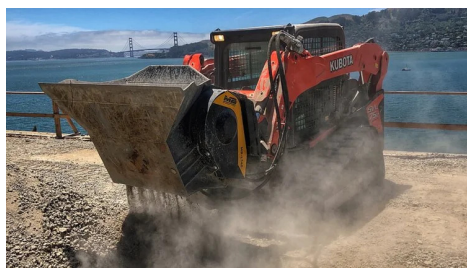


A






B

C



SPECIFICATIONS

	Recommended excavator	ton	7,5 - 13
	Recommended backhoe loader	ton	5 - 10
	Recommended skid steer loader*	ton	3 - 6
	Weight	ton	0,98
	Load capacity	m ³	0.2
	Pressure	bar	200 - 250
	Back pressure	bar	< 10
	Oil flow rate**	l/min	98 - 150
	Crusher mouth width	mm	800
	Crusher mouth height	mm	250
	Size A	mm	1530
	Size B	mm	1230
	Size C	mm	800

* Please verify machine's Rated Operating Capacity.

** The minimum hydraulic flow rate value must be alongside the required operating pressure.

OPTIONAL ACCESSORIES

Dust suppression kit

Hour meter

24 Month Warranty

APPLICATION AREAS



Demolitions



Road works



Inert material
recycling



Urban construction
sites